

3
(K+S)
m²

A4
1H+KK+S
38.0m²

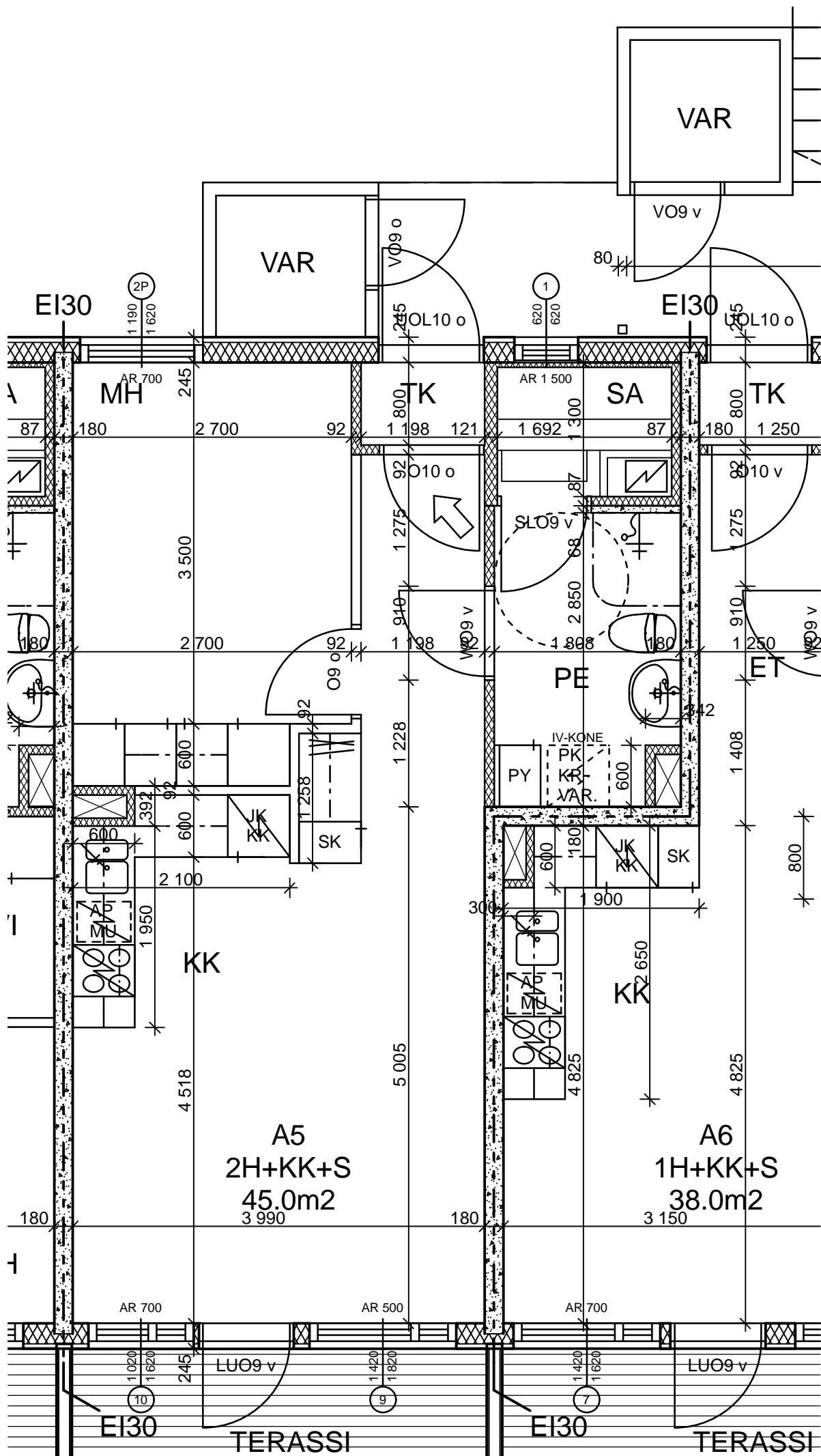
OH

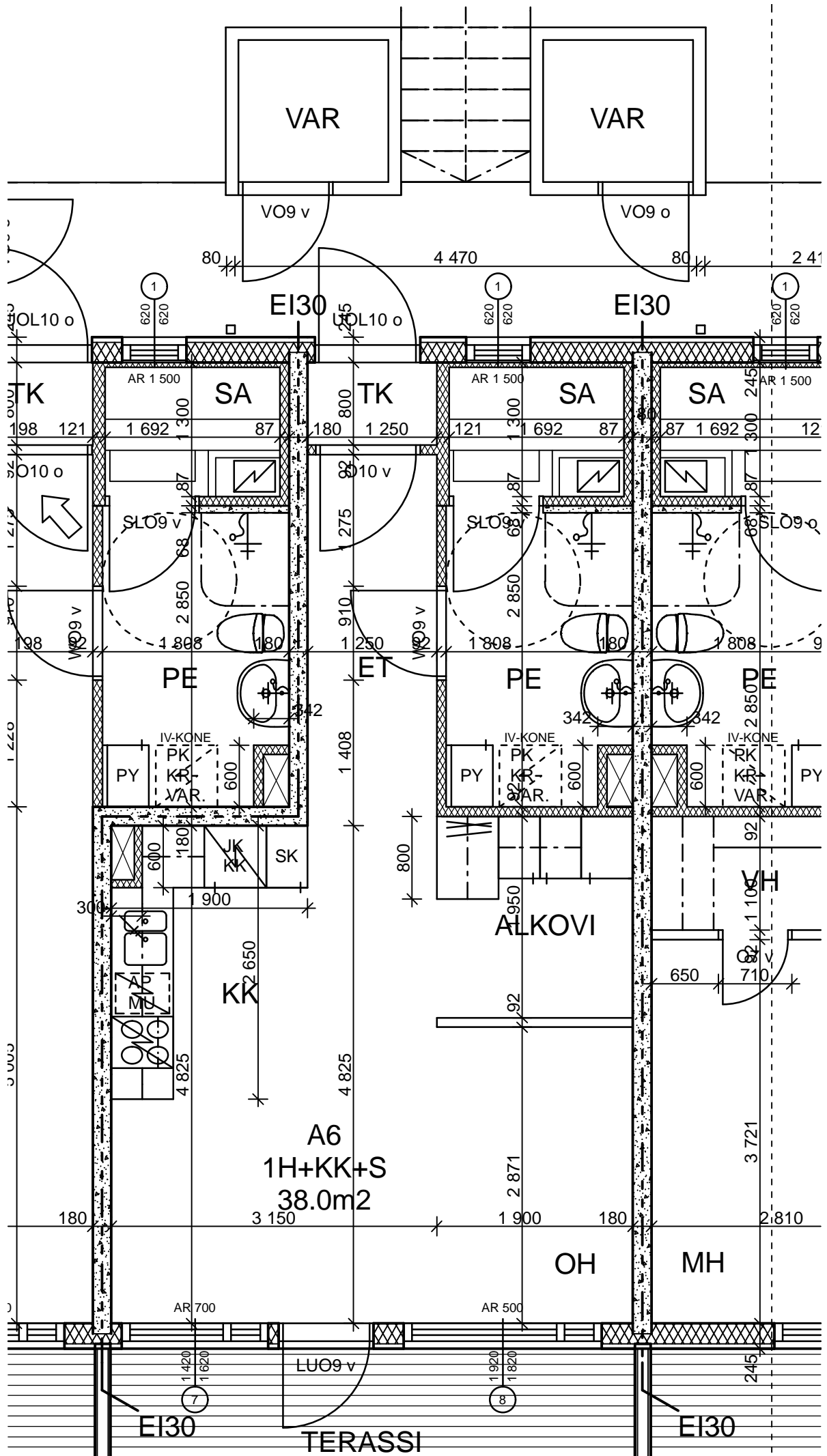
SSI

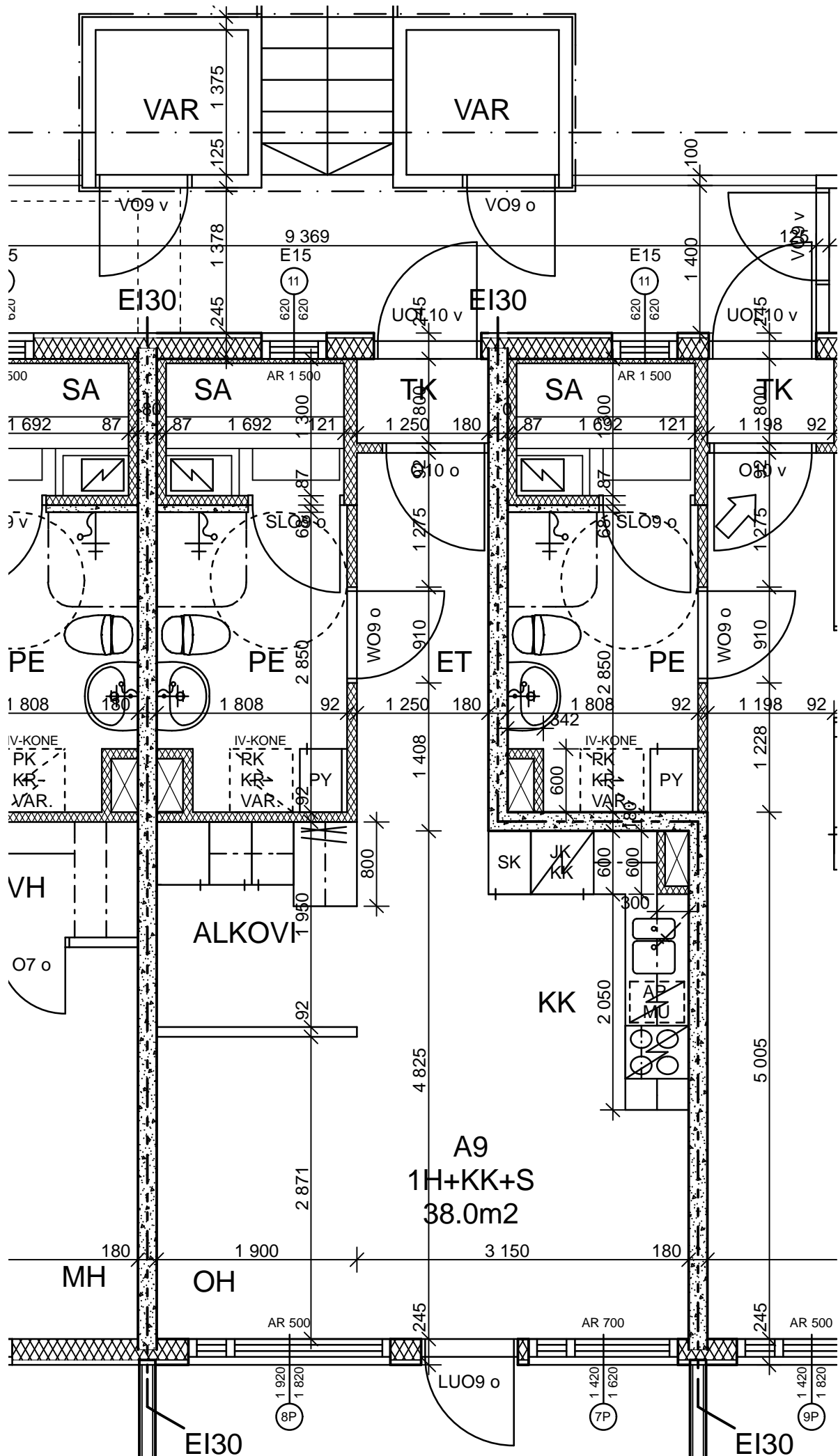
EI30

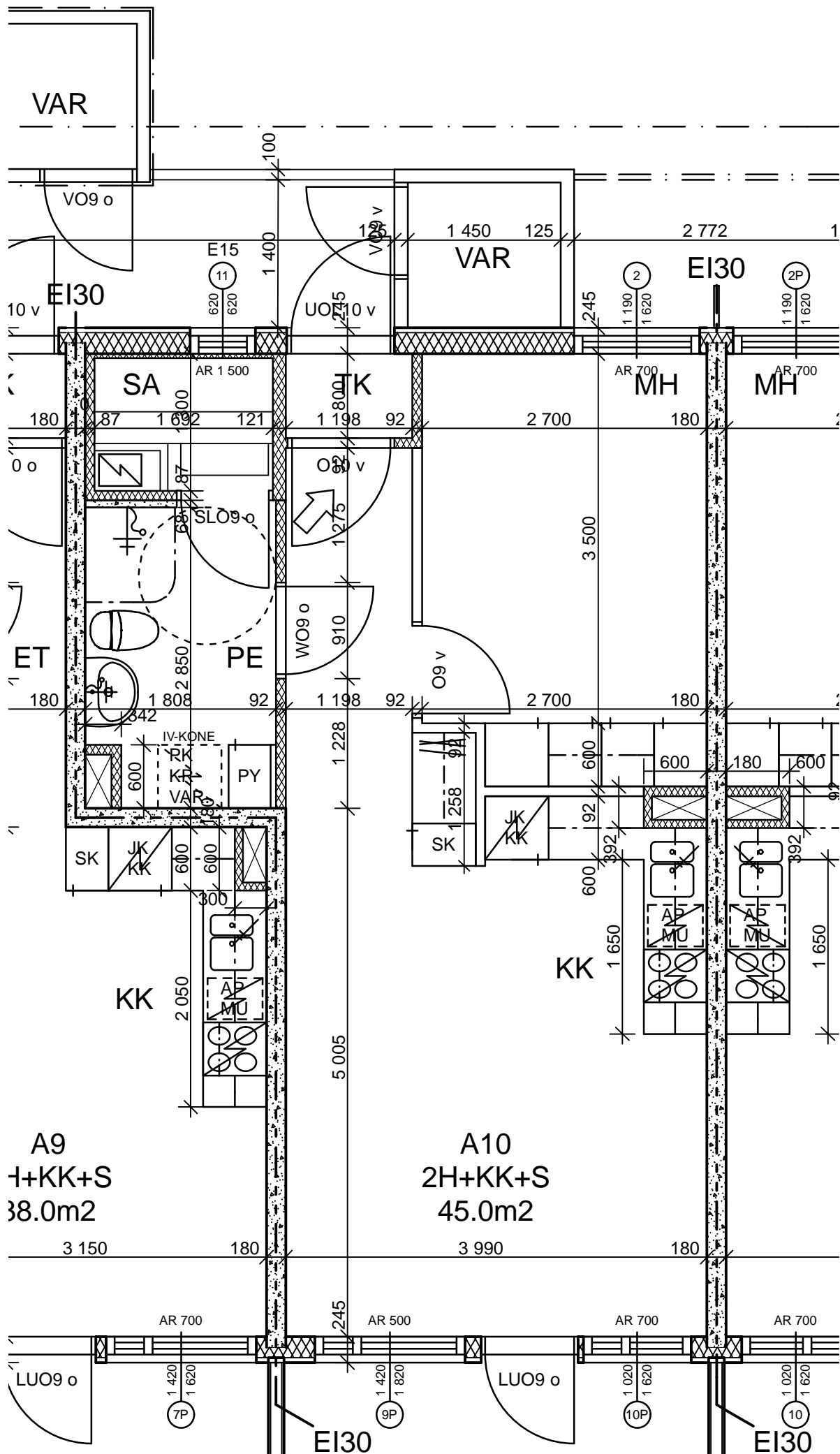
TERASSI

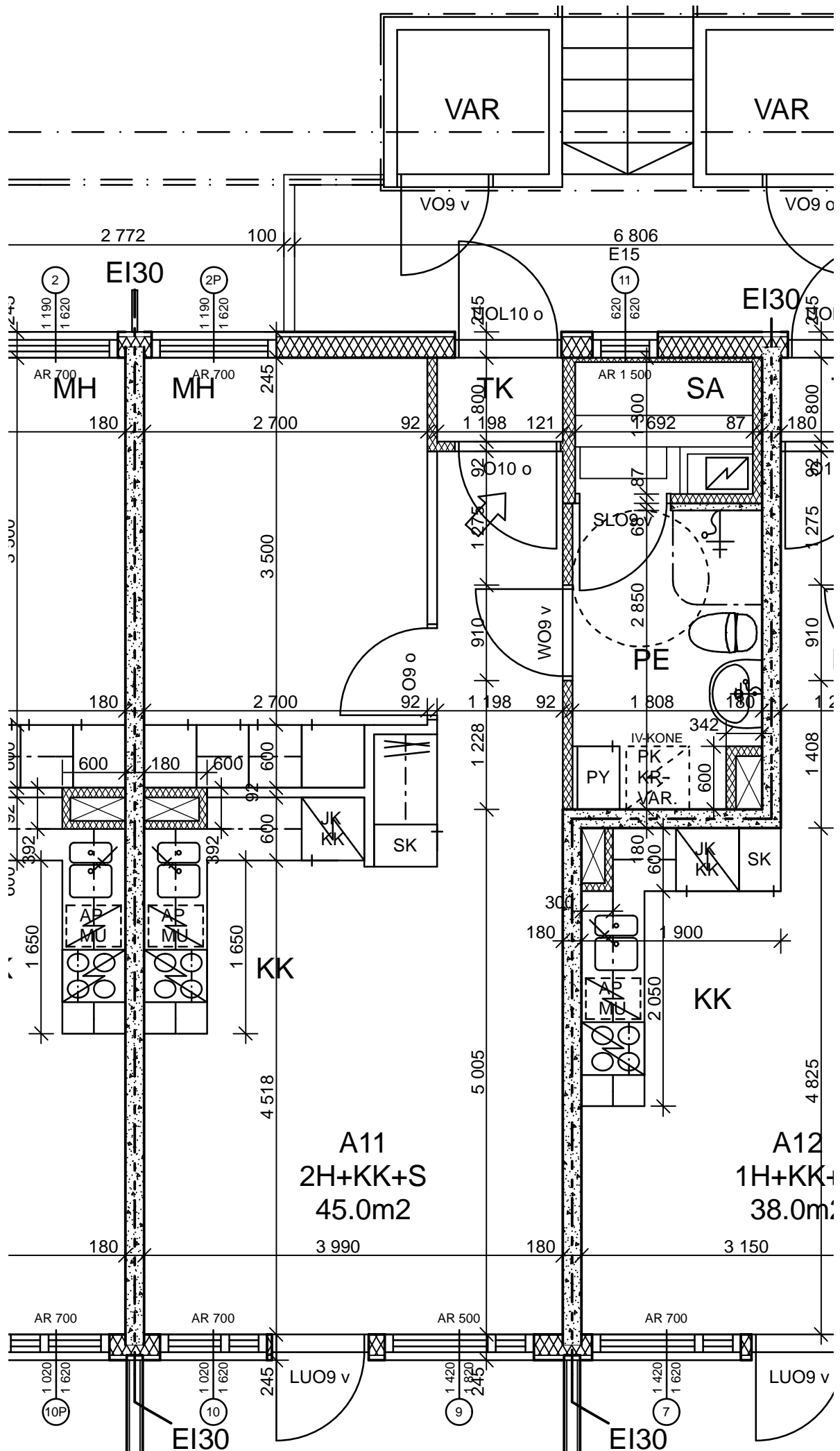
ER

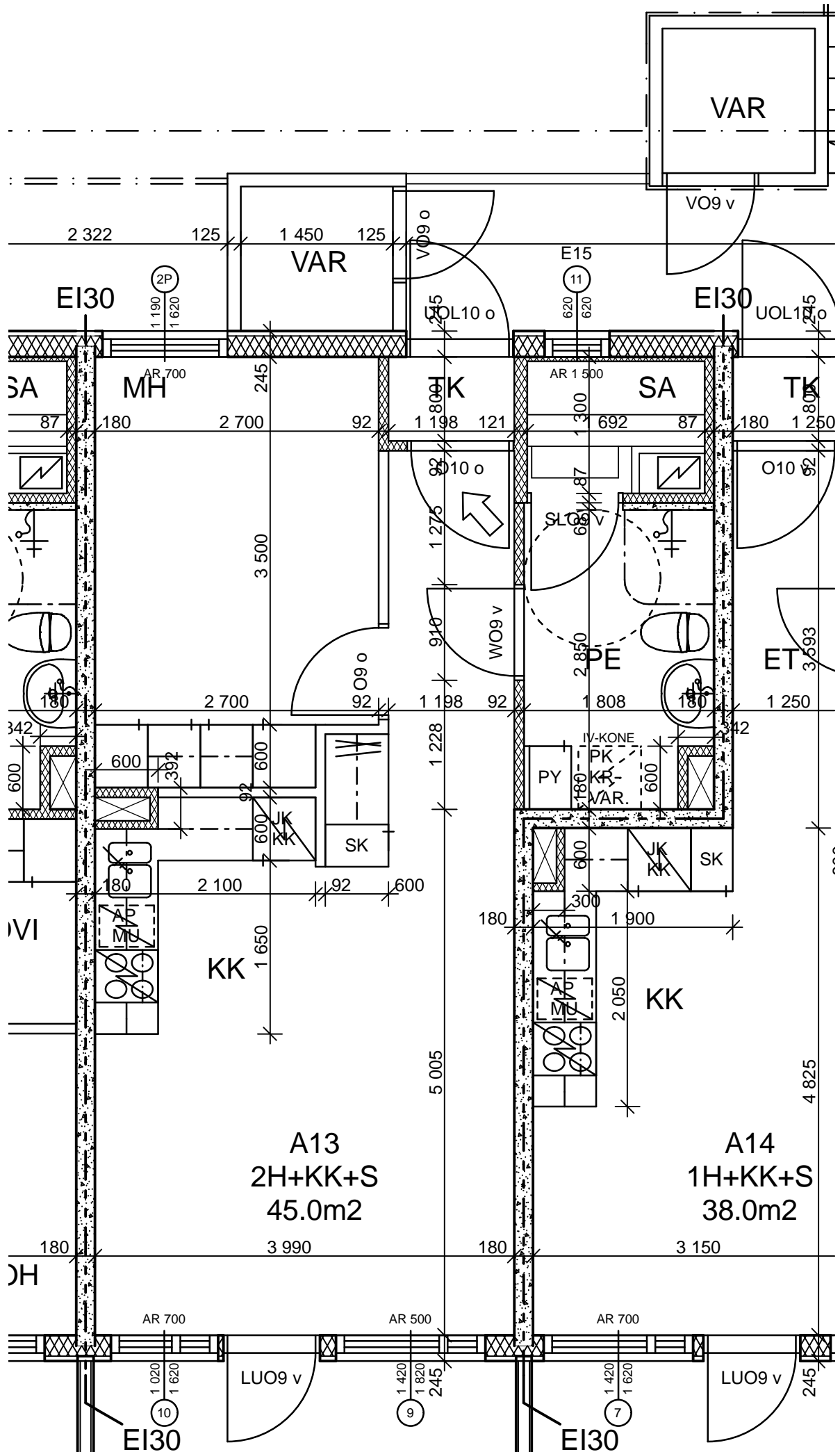


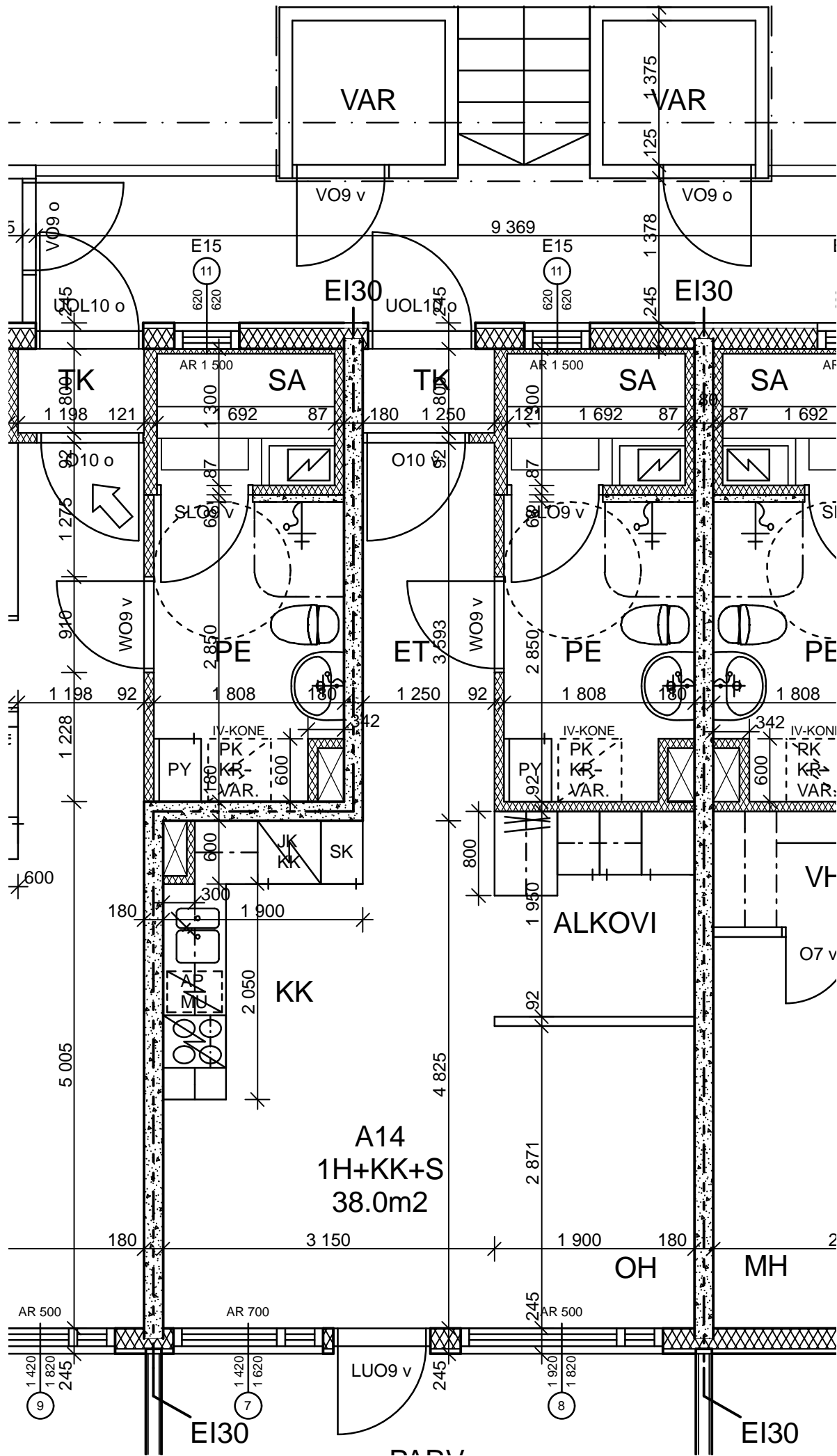


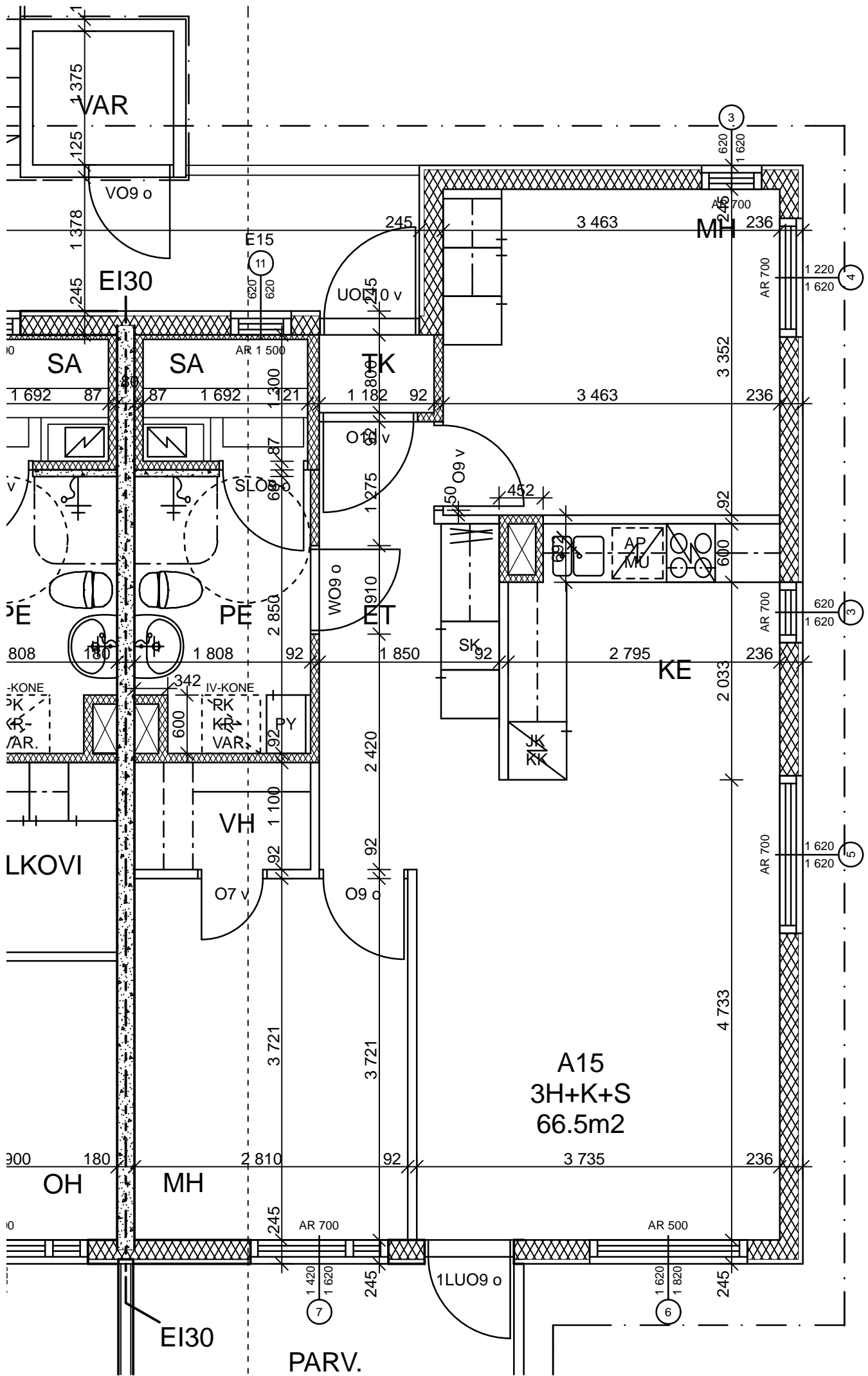


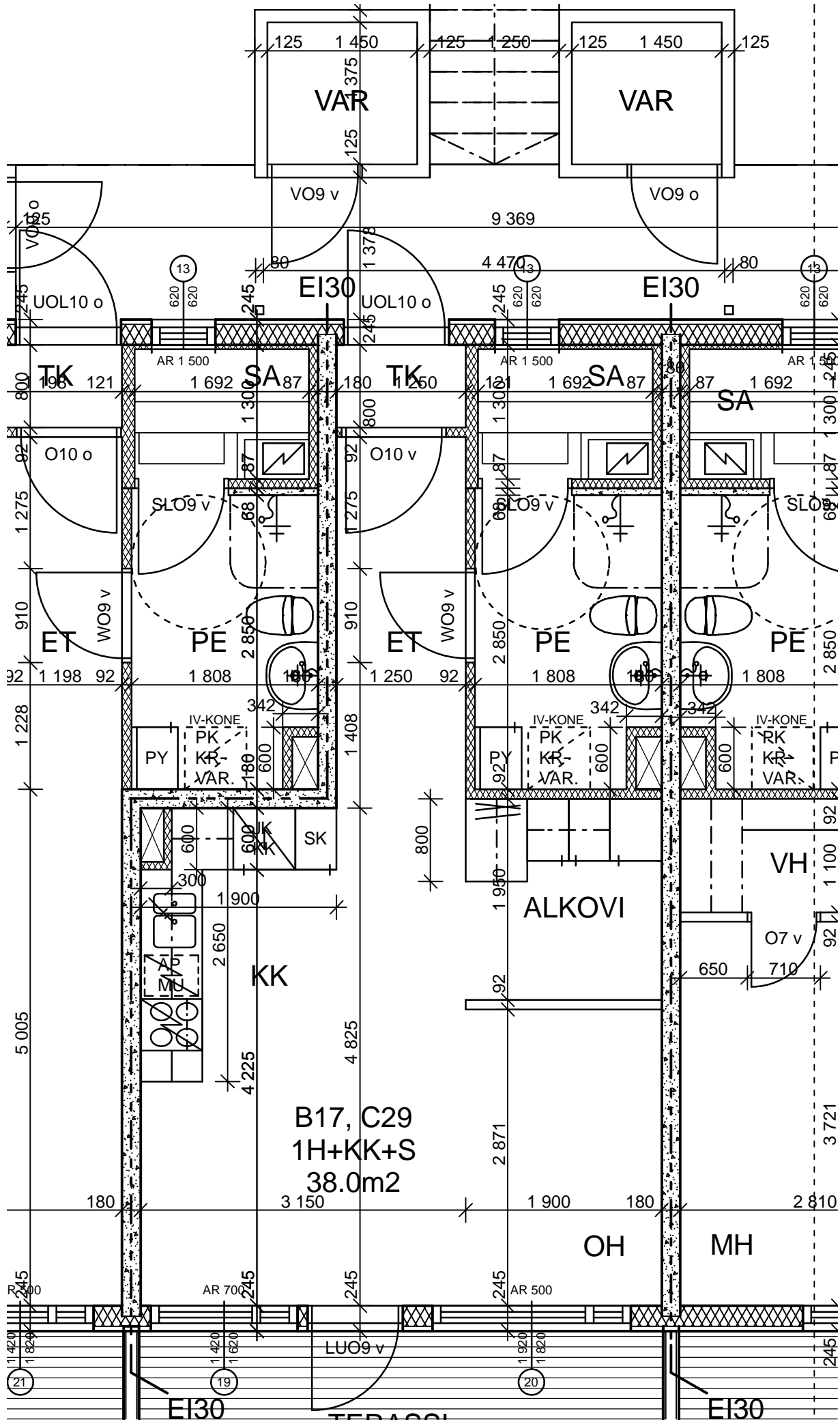




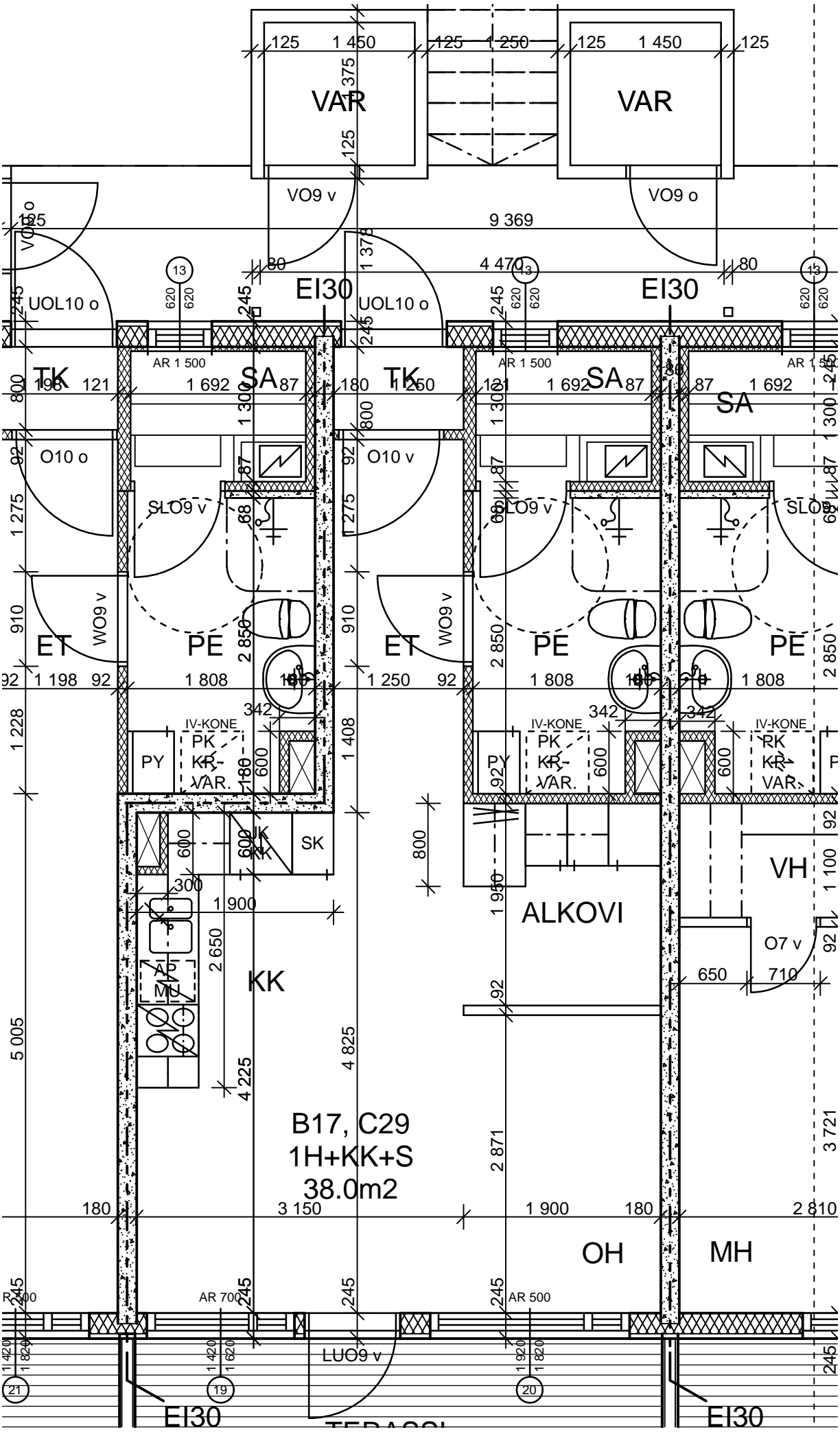


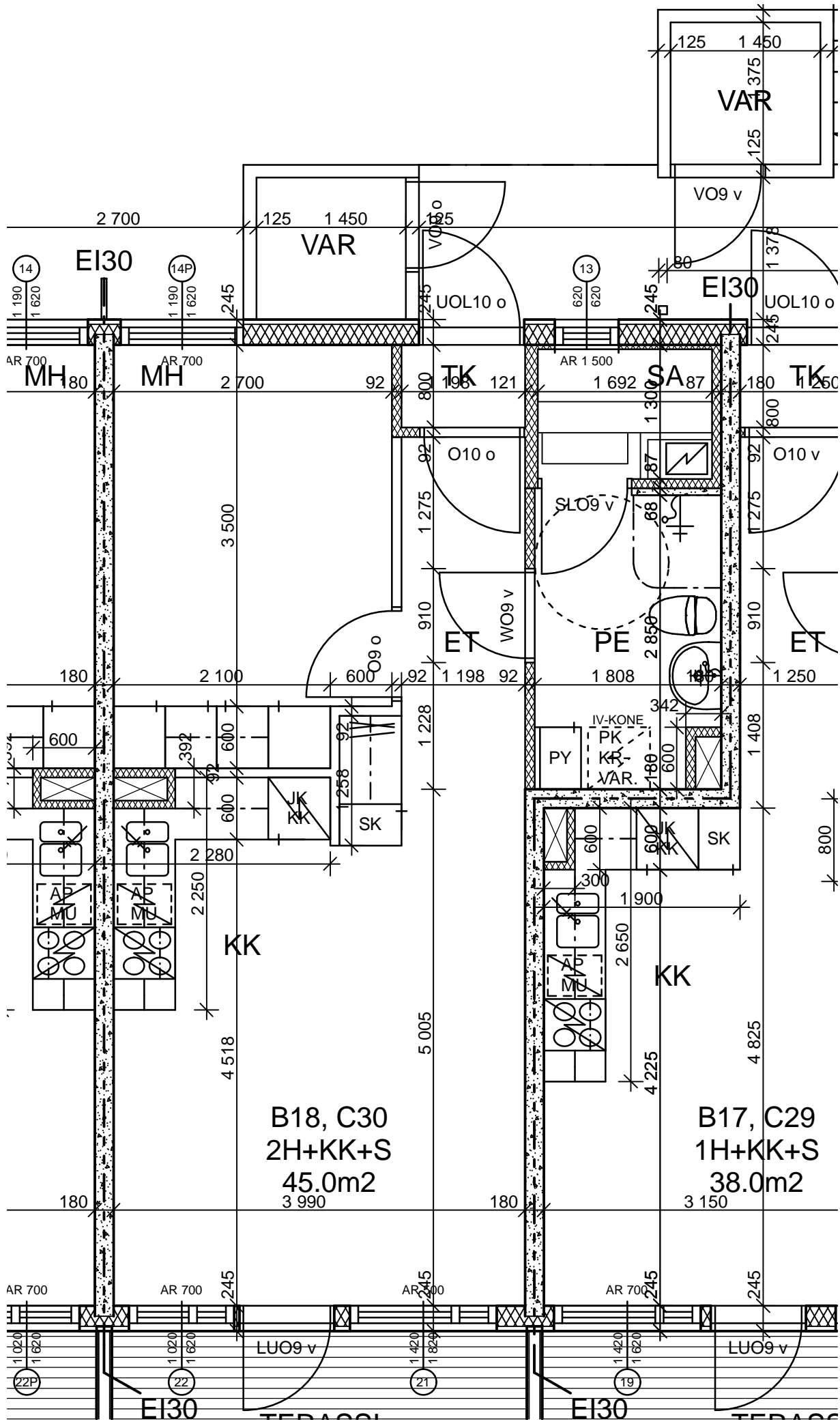






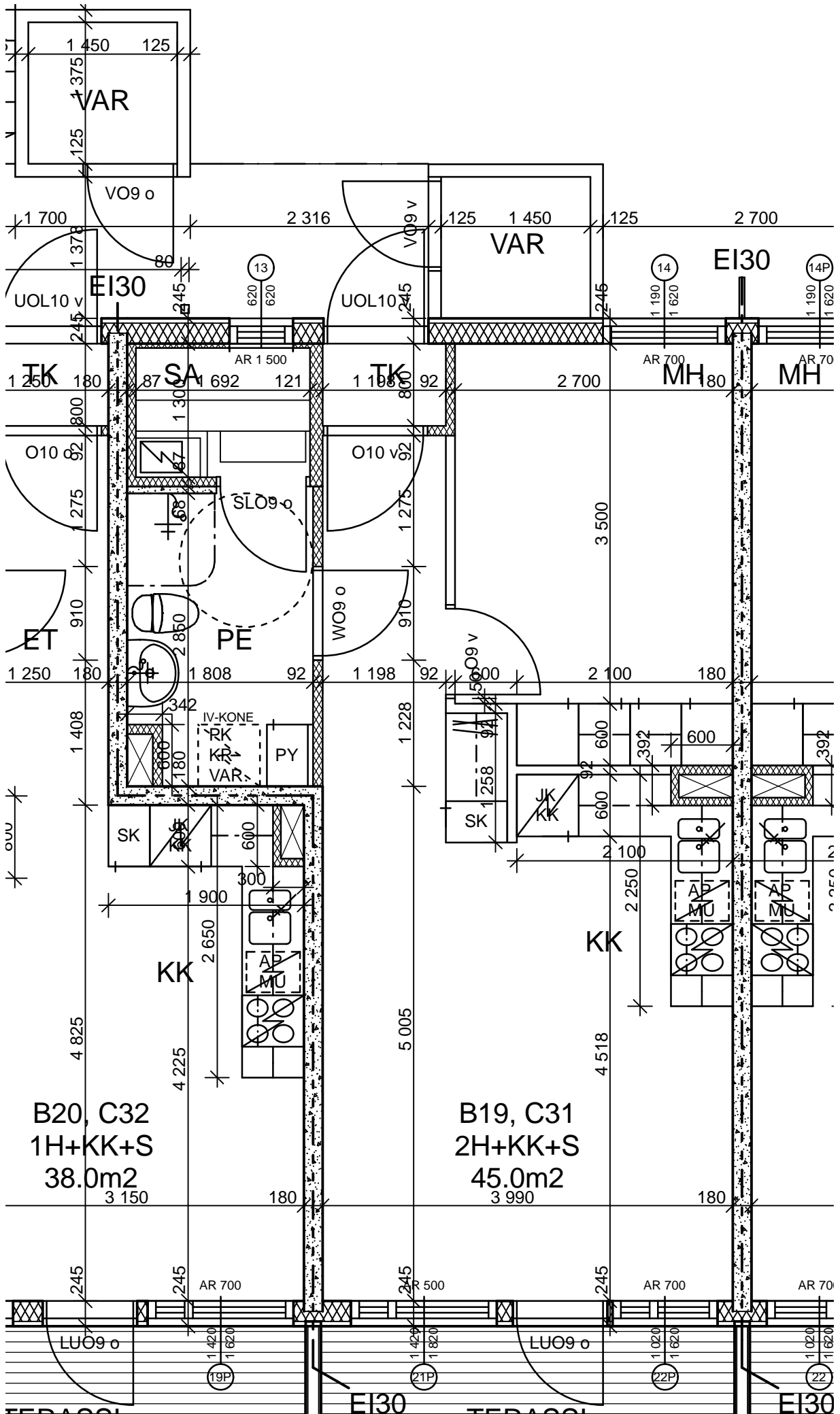
B17, C29
1H+KK+S
38.0m²

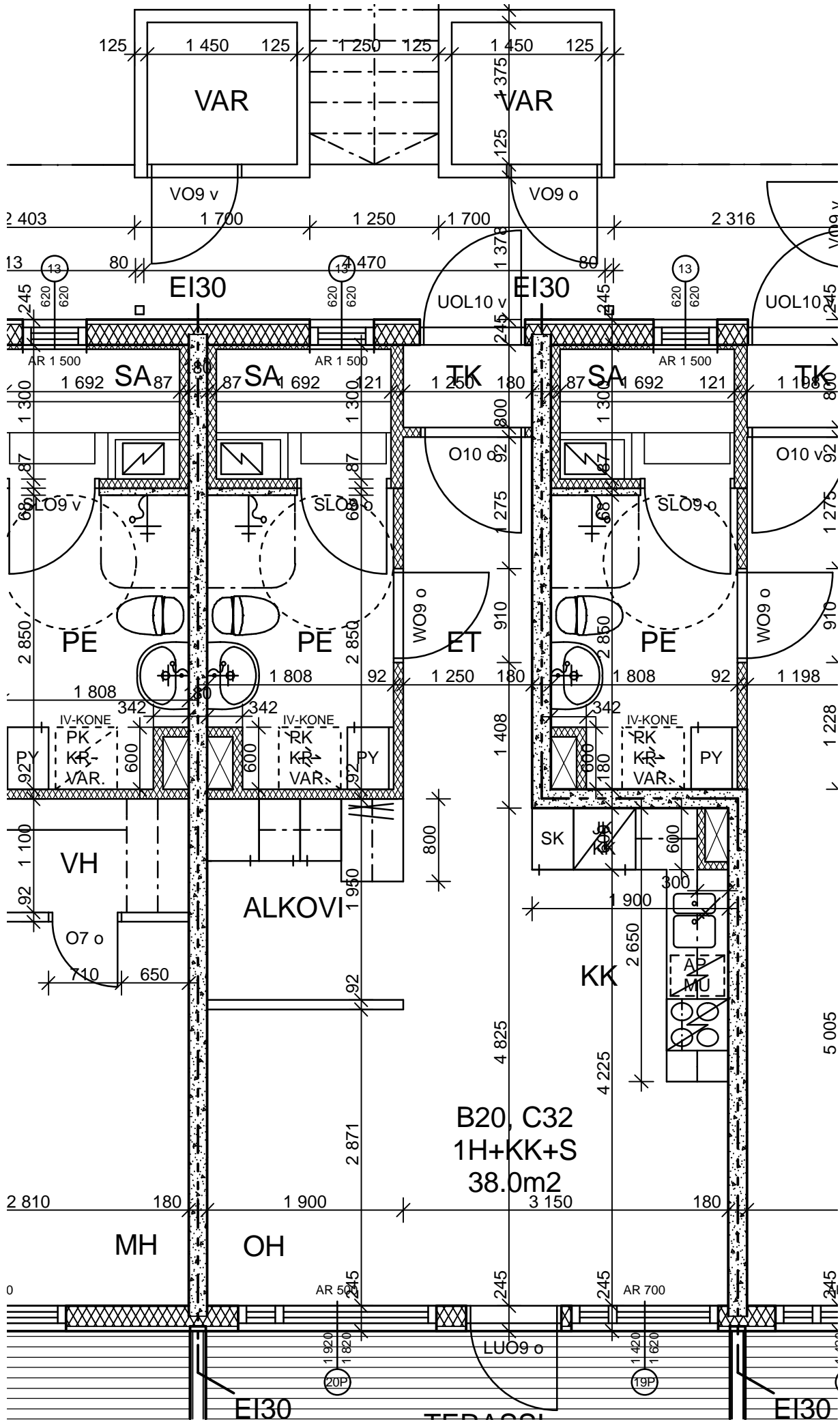




B18, C30
2H+KK+S
45.0m²
3 990

B17, C29
1H+KK+S
38.0m²
3 150





B20, C32
 1H+KK+S
 38.0m²

5 005

2 810

MH

OH

EI30

EI30

13

2 403

EI30

EI30

UOL10 v

AR 1 500

SA 87

SA 87

TK 180

SA 87

TK 180

LO9 v

PE

PE

ET

PE

IV-KONE

PK

K

VAR.

IV-KONE

RK

K

VAR.

IV-KONE

RK

K

VAR.

VH

O7 o

ALKOVI

KK

SK

600

0

AR 500

AR 700

LUO9 o

20P

19P

1 920

1 820

1 420

1 620

2 445

2 445

2 445

2 445

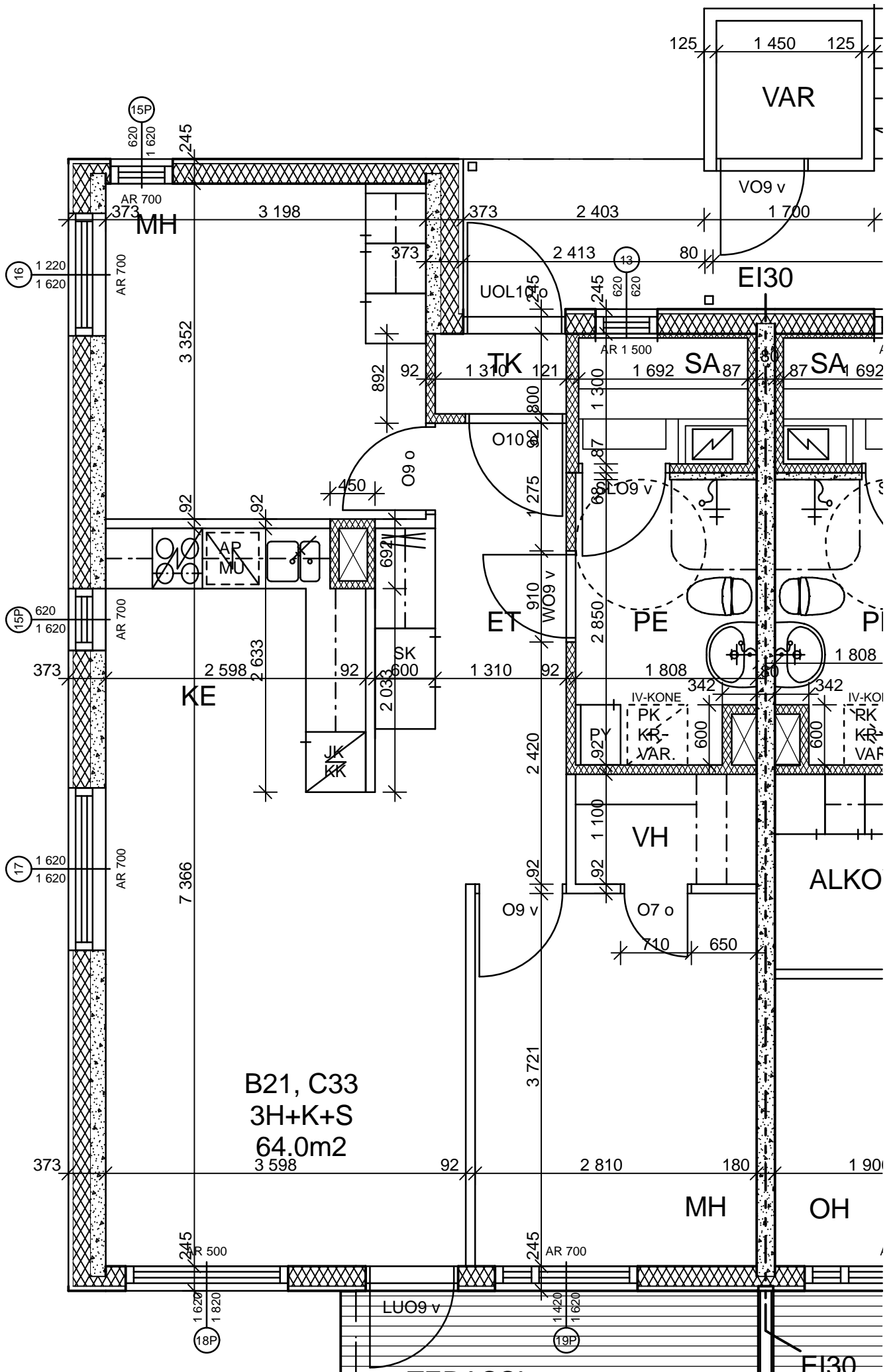
2 445

2 445

2 445

2 445

2 445



B21, C33
 3H+K+S
 64.0m²
 3598

VAR

MH

TK

SA₈₇

SA₈₇

KE

ET

PE

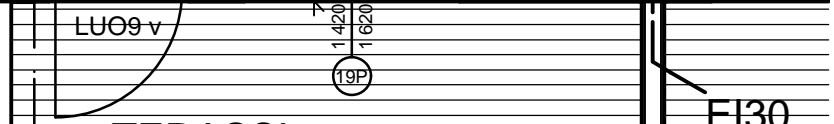
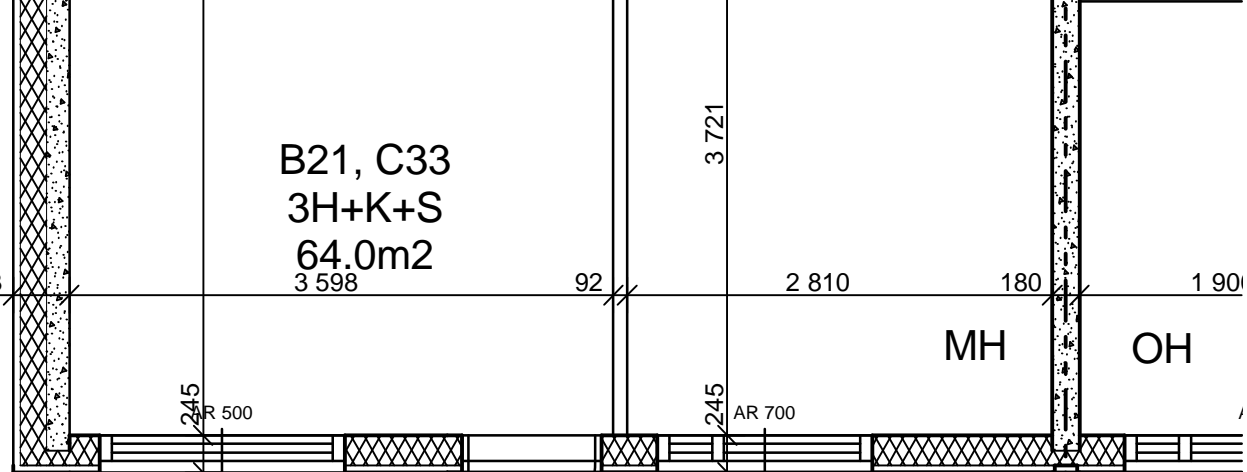
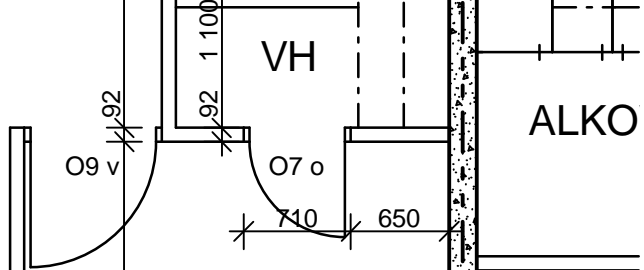
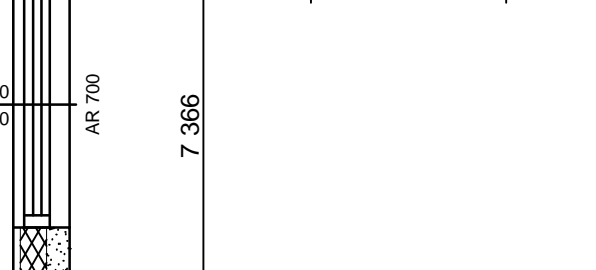
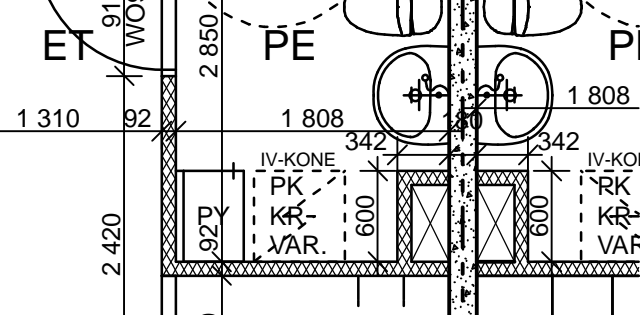
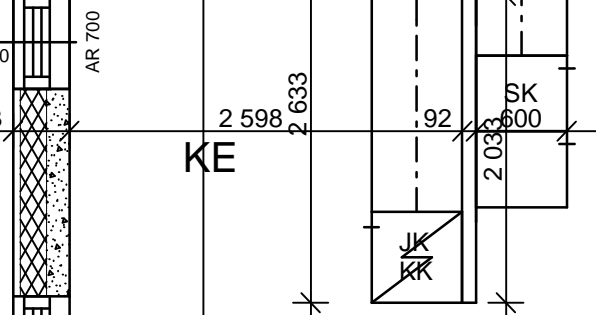
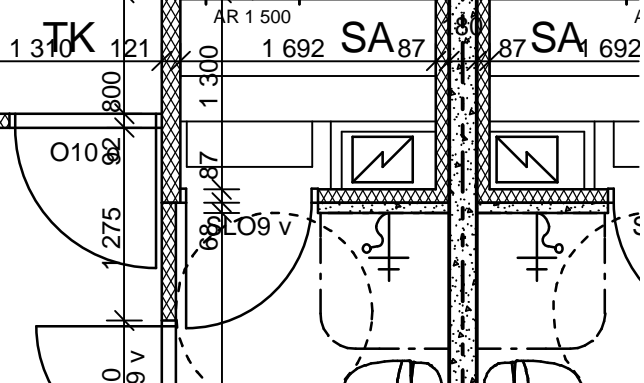
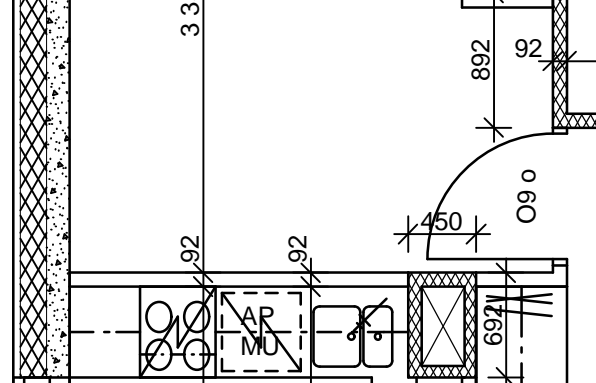
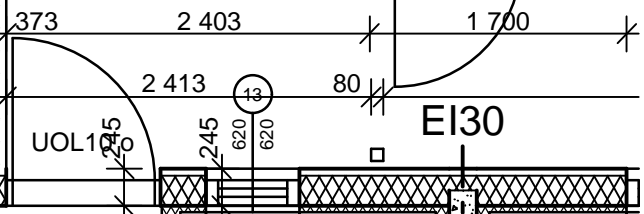
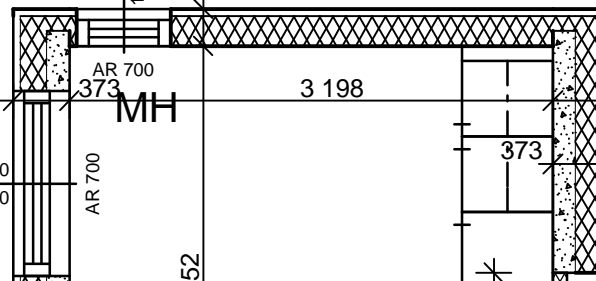
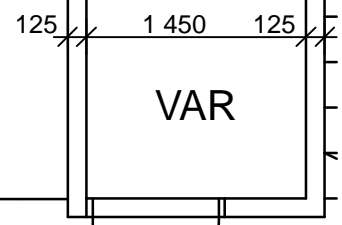
P

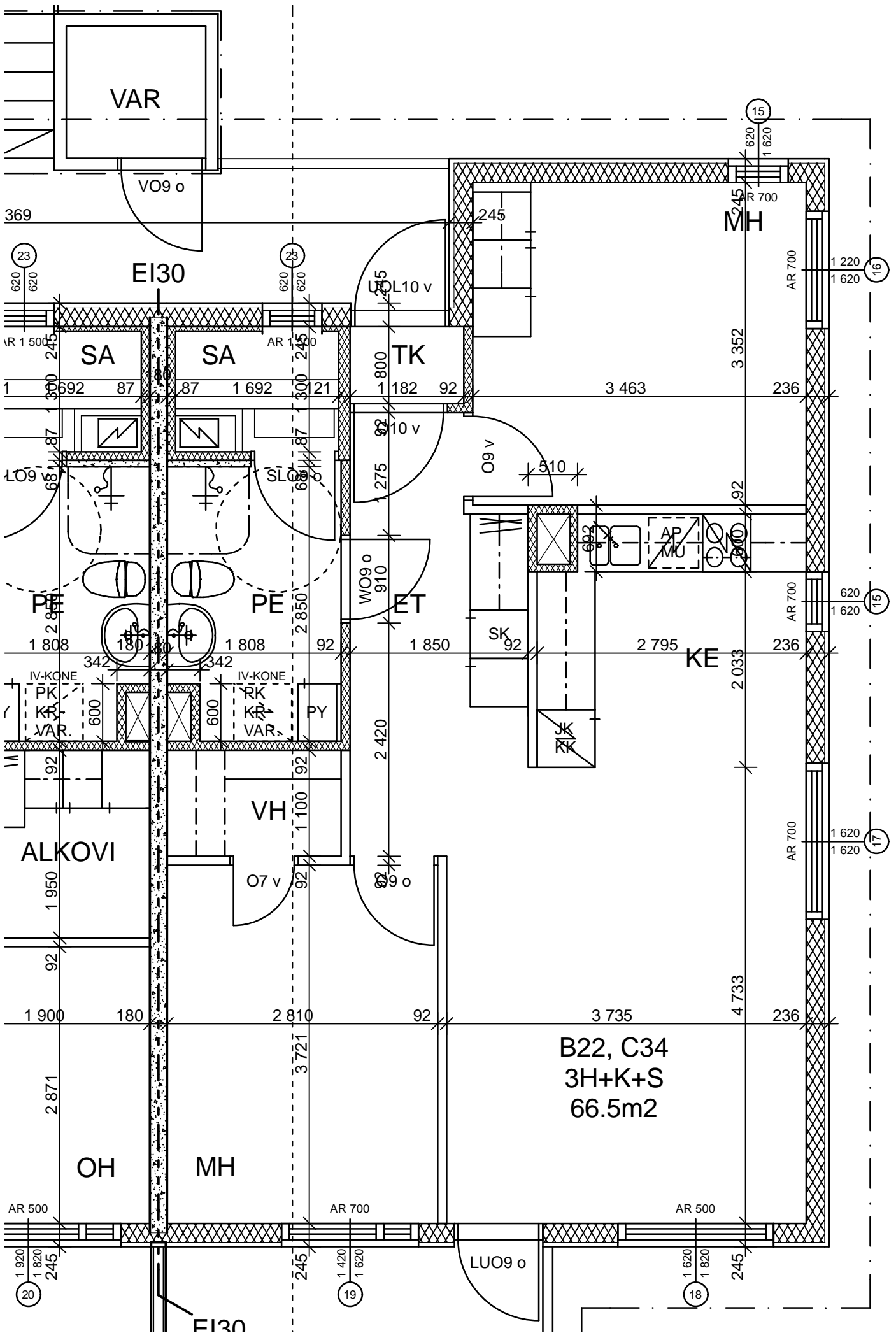
VH

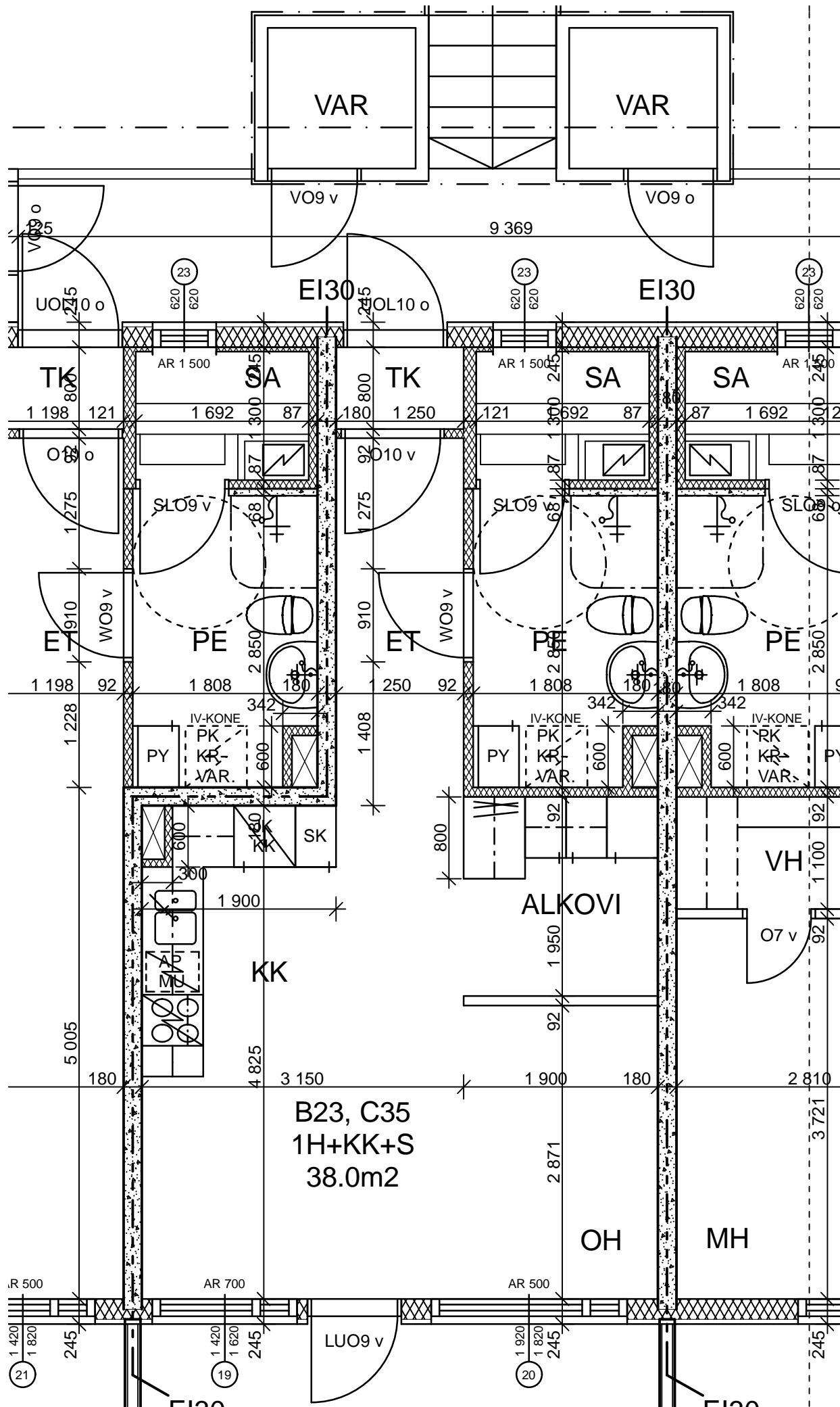
ALKO

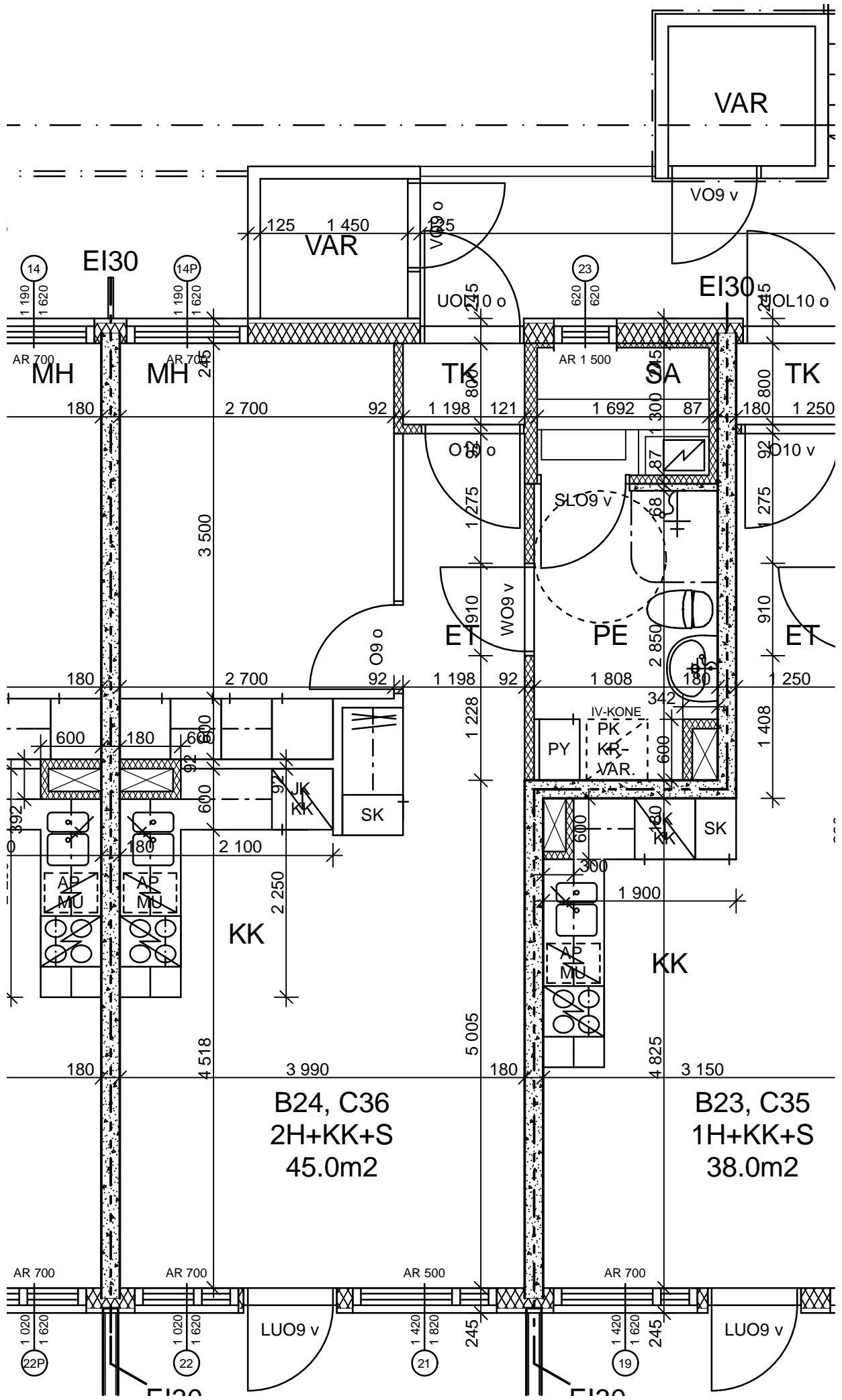
MH

OH









B24, C36
 2H+KK+S
 45.0m²

B23, C35
 1H+KK+S
 38.0m²

